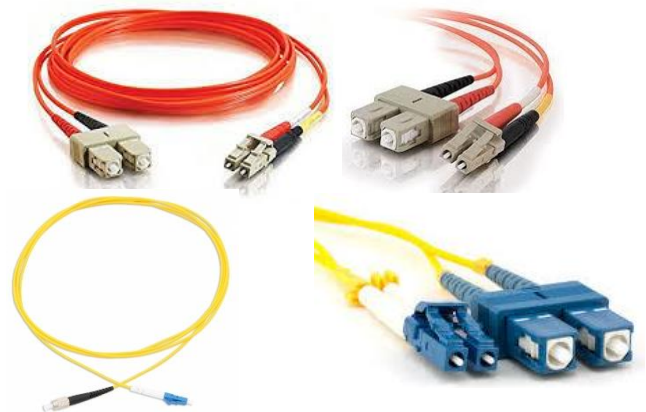


Uniway patch cords are available with full standard optical specifications, precise length tolerances. All assemblies are 100% inspected for optical characteristics and fiber end face finish.

The optical fiber patch cords are suitable for data communication, telecommunication applications. The terminated connectors in assemblies are designed to and are compatible with industry standards (EIA/TIA, IEC, ANSI, NTT and Telcordia). Uniway can deliver customized patch cords as per requirement.



SPECIFICATION

Connector Type	SC/UPC, SC/APC, FC/UPC, FC/APC, LC/UPC, LC/APC, E2000/APC, E2000/UPC, ST/UPC
Optical Fiber	Single mode (8/125 or 9/125) and multimode (50/125 or 62.5/125) options available
Cable Type	Simplex and duplex cables available
	PVC or LSZH
Cable outer jacket diameter	900 μm, 1.7mm, 2.0mm, 3.0mm
Insertion loss	Typical: ≤0.2 dB, Max. 0.3 dB (MTRJ: Max 0.5dB)
Return loss:	PC≥45 dB, UPC≥ 50dB, APC≥ 60dB (SM), ≥25dB (MM)
Cable Color	Yellow for Single Mode, Orange for Multi-Mode & Aqua for OM3
Length	Various customized length from 0.5 m to 50 m
Connector Ferrule	Zirconia Ceramic
Repeatability	≤0.2 dB 500 times mating cycles
Working Temperature	- 20° C to + 70° C
Storage Temperature	- 20° C to + 70° C

UNIWAY INFOCOM

9/4, 2nd Floor, Block-C, Wazirpur Industrial Area, New Delhi-110052, INDIA
Email: info@uniwayinfo.com, Web: www.uniwayinfo.com, Ph.: 011-42470111